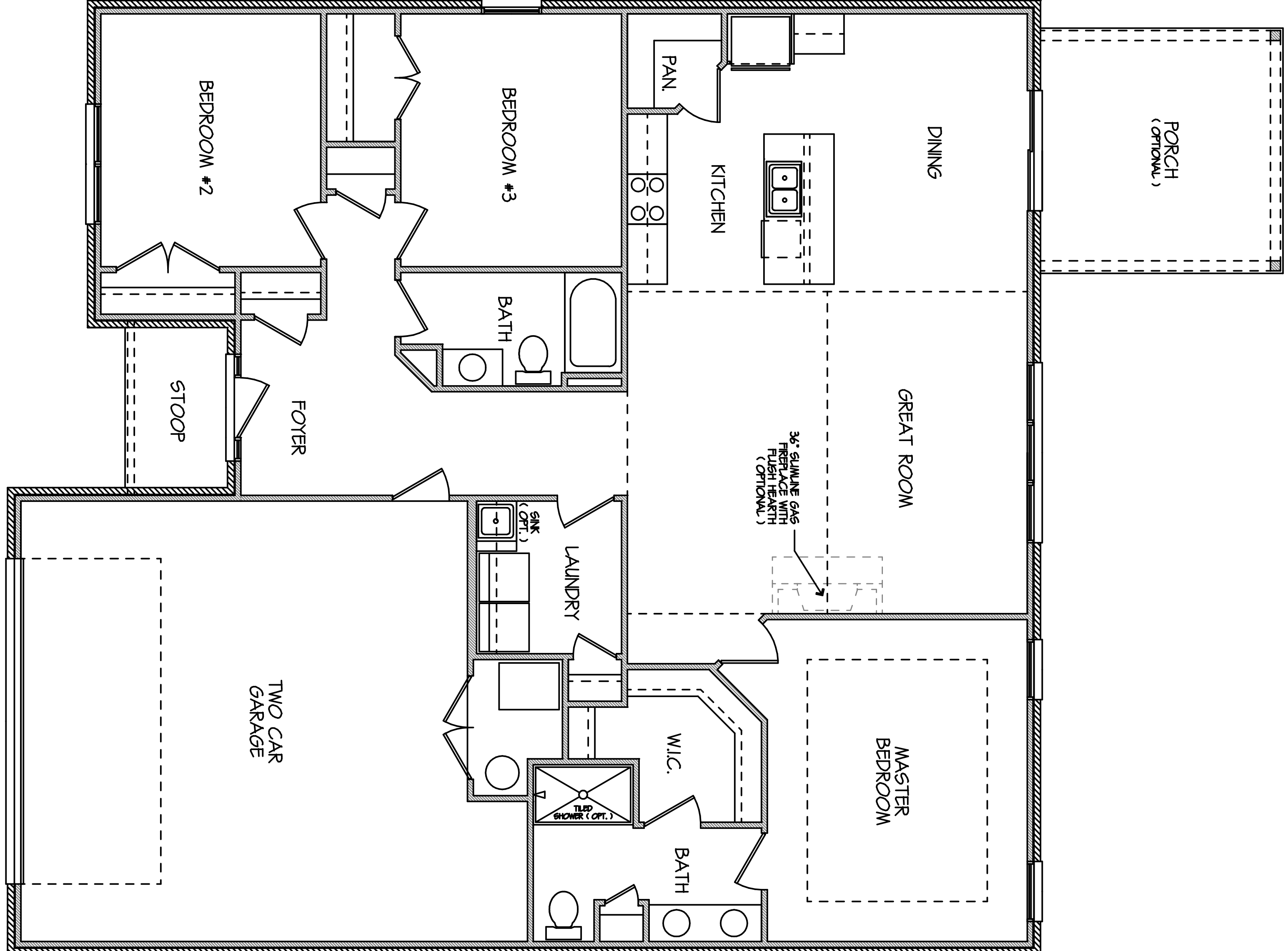


BUILT BY:
 KEYSTONE
 HOMES IN TROY

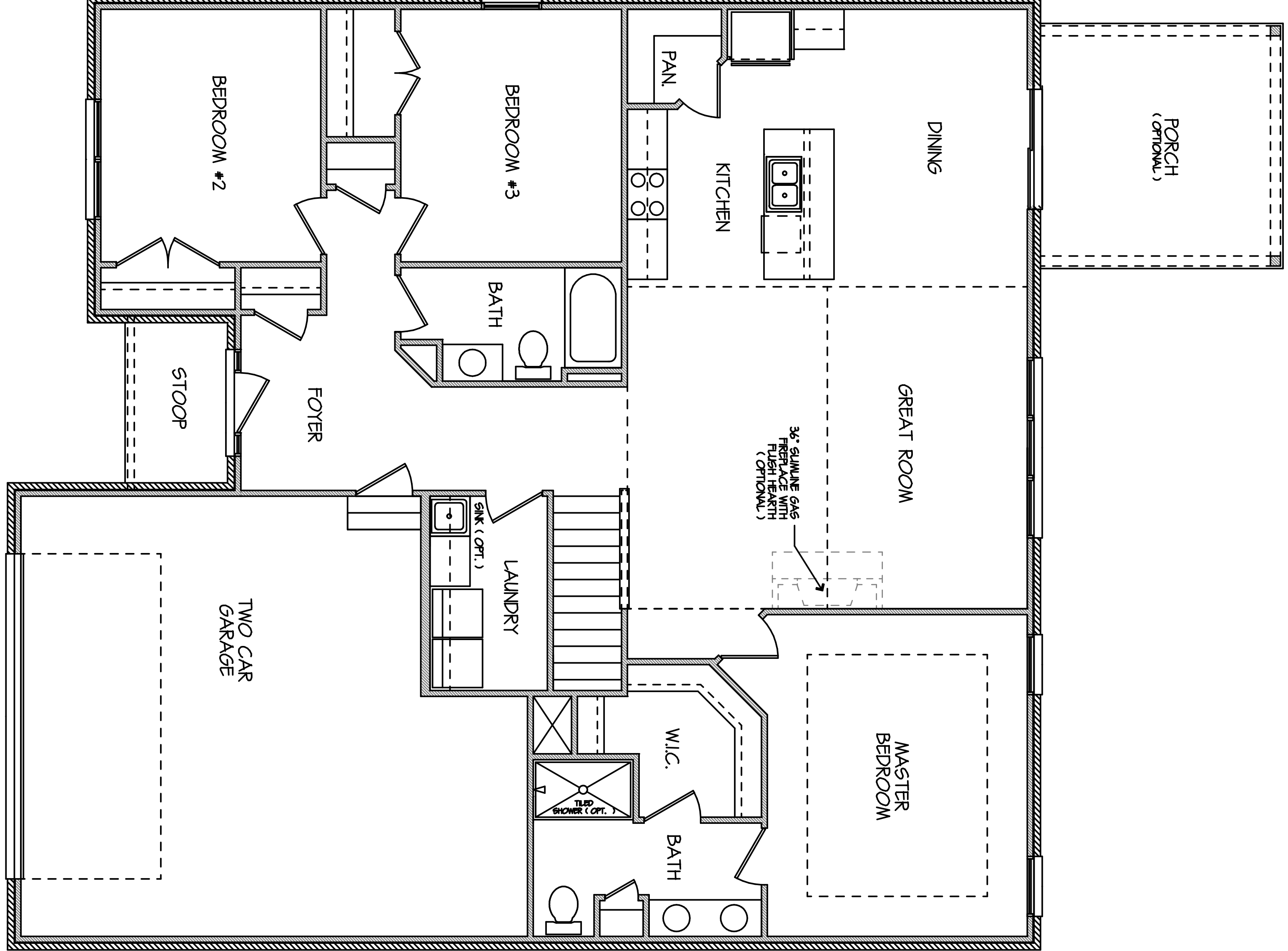
PLANS FOR:
 THE "DOGWOOD"

DISCLAIMER NOTE:
 WHILE EVERY ATTEMPT HAS BEEN MADE IN PREPARATION OF THESE PLANS TO AVOID MISTAKES, SUNRAY DESIGNS CANNOT GUARANTEE AGAINST HUMAN ERROR OR OTHER VARIANCES FROM STANDARD CONSTRUCTION PRACTICES AND TECHNIQUES. CONSEQUENTLY, THE HOMEOWNER, CONTRACTOR, AND SUBS ON THE JOB MUST REVIEW ALL DIMENSIONS, DETAILS, AND APPLICABLE BUILDING CODES TO ENSURE COMPLIANCE AND ACCEPTABILITY. THEREFOR, ALL WRITTEN DIMENSIONS RULE OVER SCALE OF THE PLANS. CONTRACTOR IS RESPONSIBLE FOR FINAL VERIFICATION OF STRUCTURAL INTEGRITY AND MATERIAL LIST QUANTITIES. ALL FEDERAL, STATE, AND LOCAL CODES, ORDINANCES, REGULATIONS, ETC. SHALL BE CONSIDERED AS PART OF THE BUILDING SPECIFICATIONS.

SQUARE FEET:	MAIN LEVEL: 1,674
UPPER LEVEL:	1,674
TOTAL LIVING:	1,674
BASEMENT:	
FINISHED:	
UNFINISHED:	
GARAGE:	565
BONUS SPACE:	
SCREEN PORCH:	
PORCH:	
TOTAL OVERALL:	2,239
PLAN NUMBER:	SRD - 71A0
SHEET:	



MAIN LEVEL FLOOR PLAN / SLAB OPTION
 SCALE: 1/4" = 1'-0"



MAIN LEVEL FLOOR PLAN / BASEMENT OPTION
 SCALE: 1/4" = 1'-0"